

How to adjust the printhead on Primera Signature Cassette Printer

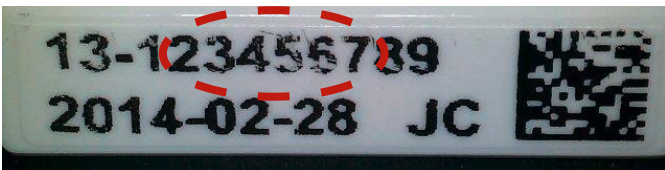
If all of the points described in the document “How to solve printing quality issues for Primera Signature Cassette Printer” have been checked and ribbon breaking is still occurring, the printhead angle may need to be adjusted. If the printhead is improperly adjusted for the used cassettes, ribbon wrinkle, ribbon breakage, and/or light printing can all occur so it is critical to make only minor adjustments and keep track of all adjustments. The printhead can be returned to its original position if no improvements are noted due to the printhead adjustments.

Begin by verifying the image position. If necessary, adjust horizontal and vertical offsets so the print image is centered on the cassette face and is not overhanging the edge of the raised pad (outlined).



1. To Correct Ribbon Wrinkle and/or Ribbon Break

Ribbon wrinkle: Appears as small lines streaked through parts of the print.

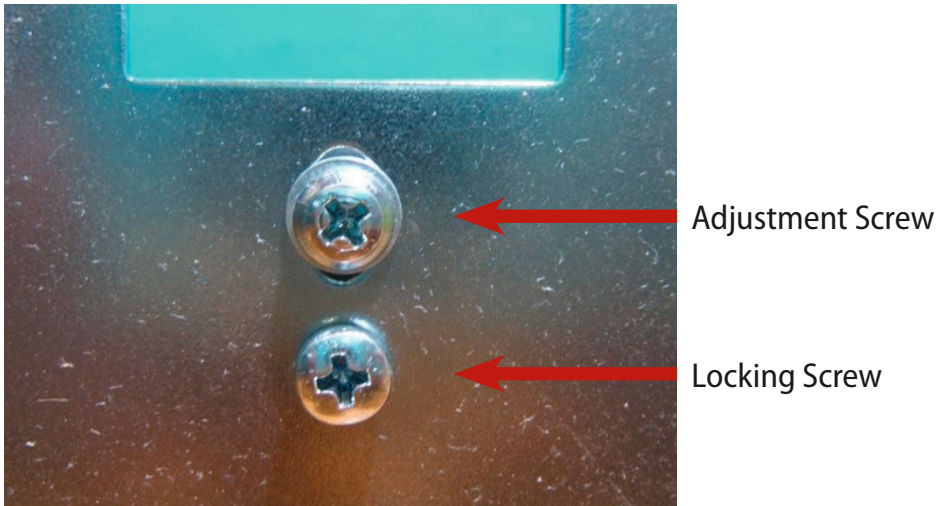


Ribbon break: A tear in the ribbon can be a complete break or relatively small leaving the ribbon intact and causing only a portion of the print to appear smeared.



a.) Turn the adjustment screw Clockwise $\frac{1}{4}$ of a turn using the instructions below.

Fully back out the locking screw before turning the adjustment screw. Retighten the locking screw snugly (do not overtighten) after adjustment.



b.) Then print some cassettes to verify the print quality.

c.) If ribbon wrinkle or ribbon breaks still occur, continue making further adjustments $\frac{1}{4}$ of a turn at a time until it no longer occurs.

NOTE:

Adjustments to the printhead will change the position of the text on the cassette face slightly. Check print alignment and adjust offsets as necessary once printhead adjustments are complete.

2. To Correct Light Printing

NOTE:

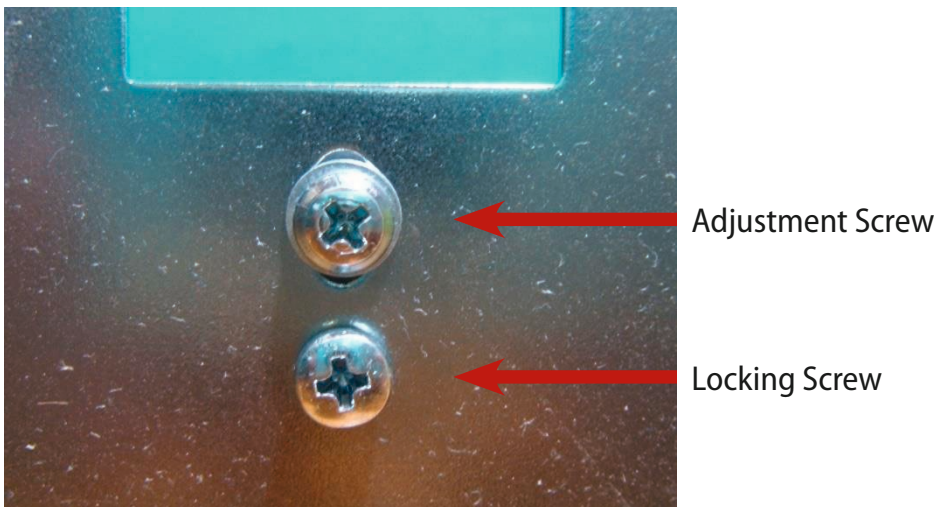
Adjusting a printhead to increase the image density on cassettes that have a rough surface or that have low spots on the printable face of the cassette will likely increase the chance of having ribbon wrinkle or ribbon tears. Adjusting the printhead to increase density for such cassettes is not recommended and should only be done if all other options have been explored.

Quality is poor throughout entire width of print, with patches coming in very faded or speckled.



- a.) Turn the adjustment screw Counterclockwise $\frac{1}{4}$ of a turn using the instructions below.

Fully back out the locking screw before turning the adjustment screw. Retighten the locking screw snugly (do not overtighten) after adjustment.



Turn the adjustment screw counterclockwise to make the printed image darker.



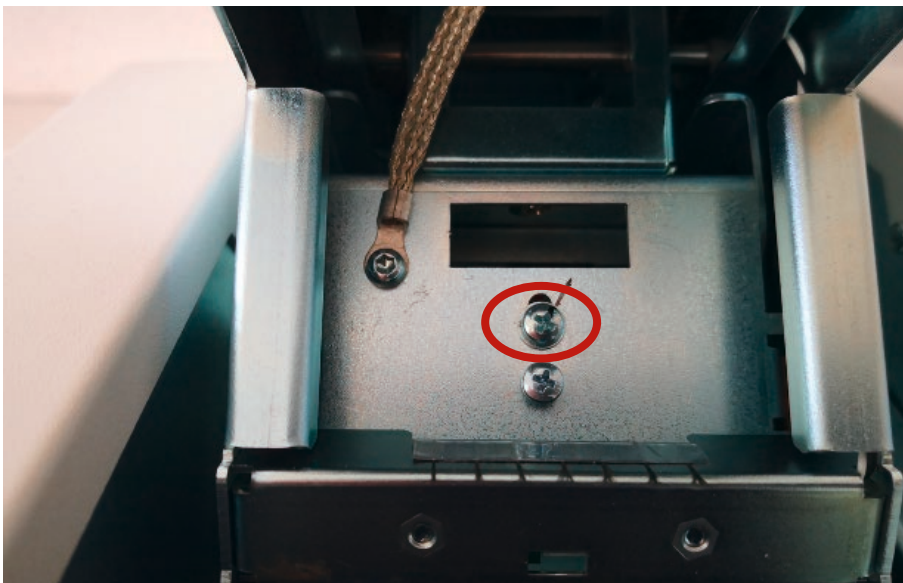
b.) Then print some cassettes to verify the print quality.

c.) If the printed image is still light, continue making further adjustments $\frac{1}{4}$ of a turn at a time until the image quality is acceptable.

NOTE:

If too large of an adjustment is made, ribbon wrinkle or ribbon breaks will likely occur. Adjustments to the printhead will change the position of the text on the cassette face slightly. Check print alignment and adjust offsets as necessary once printhead adjustments are complete.

It would be a good idea to mark the original setting before changing the settings as described. That makes it easier to return to the old settings and to verify if only the mentioned quarter turn was done.



DTM Medical GmbH
Mainzer Strasse 131
65187 Wiesbaden
Germany
Tel.: +49 611 927770
vertrieb@dtm-medical.eu
dtm-medical.eu

